

Ratio= drug area/IS area

Measured conc.= (ratio/0.00366)-(+0.0355)

Function is $Y = 0.00366X + 0.0355$ (R= 0.9987)

p<0.05

Table 32: Raw data of the standard curve with regards to correlation, slope, R², and intercept for day three for candesartan

Correlation (R)	Slope	R ²	intercept
0.9987	0.00366	0.9974	+0.0355

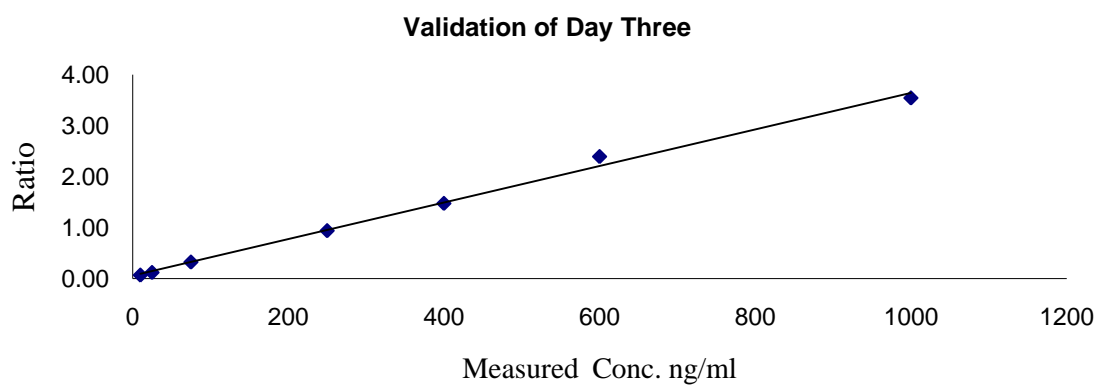


Figure 5: The plot of calibration curve levels against their analytical response, in day three validation for candesartan.